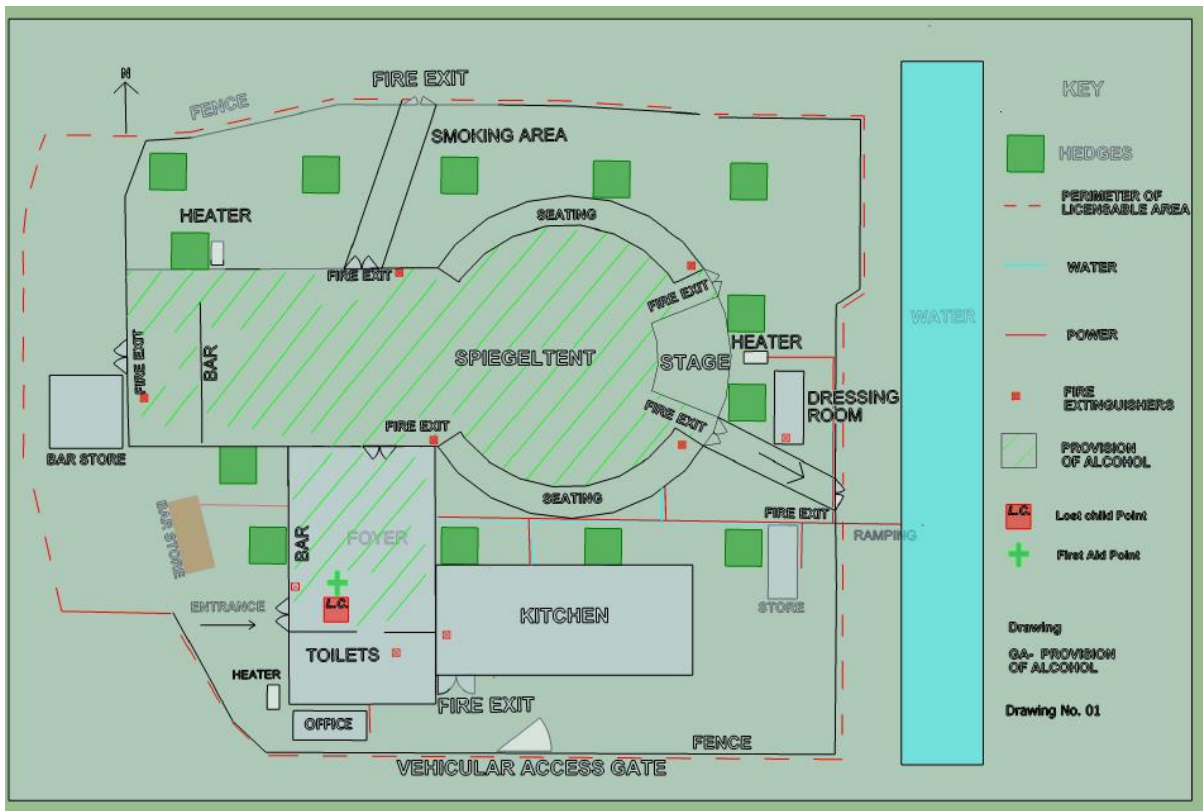
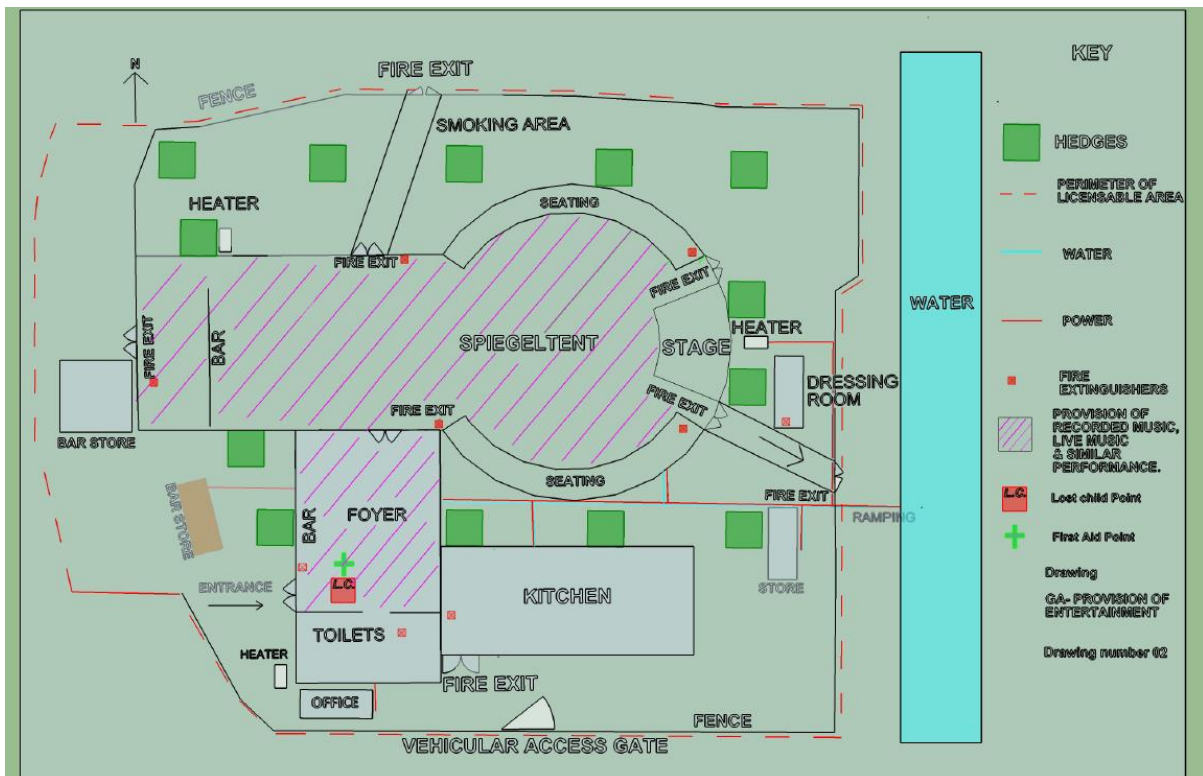


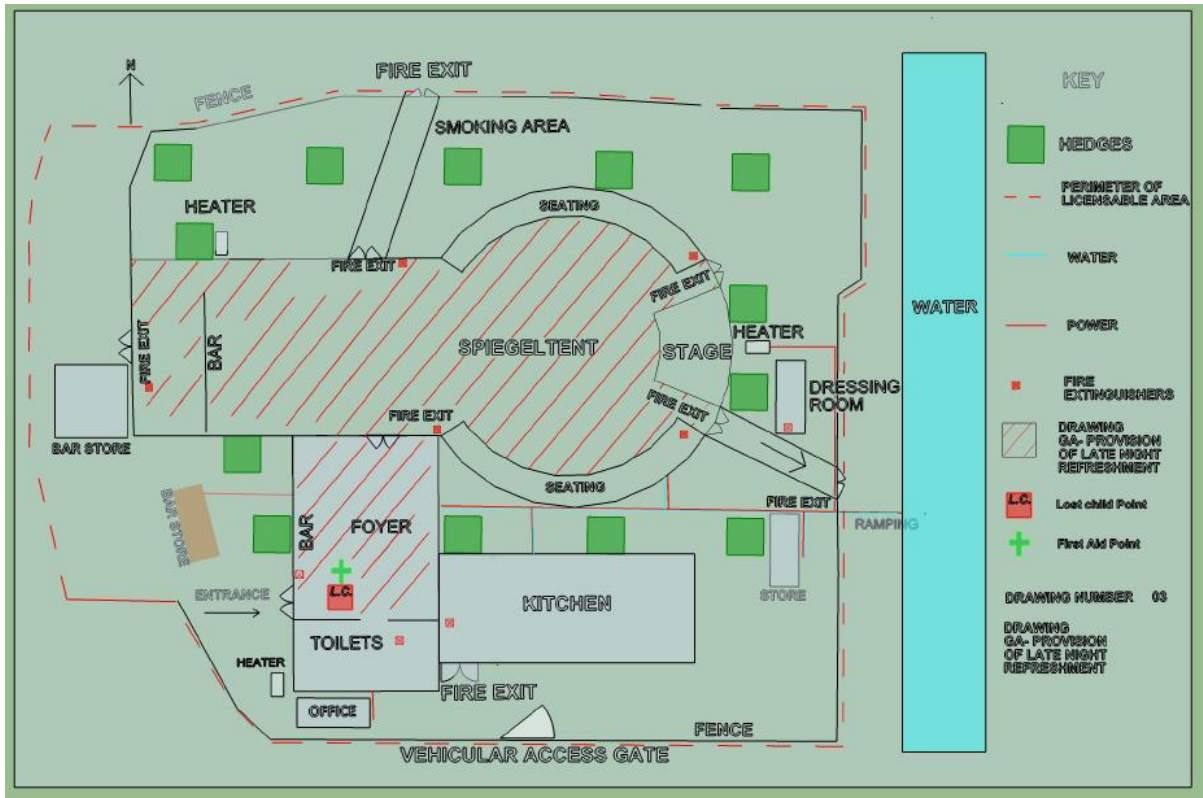
Drawing No1



Drawing No.2



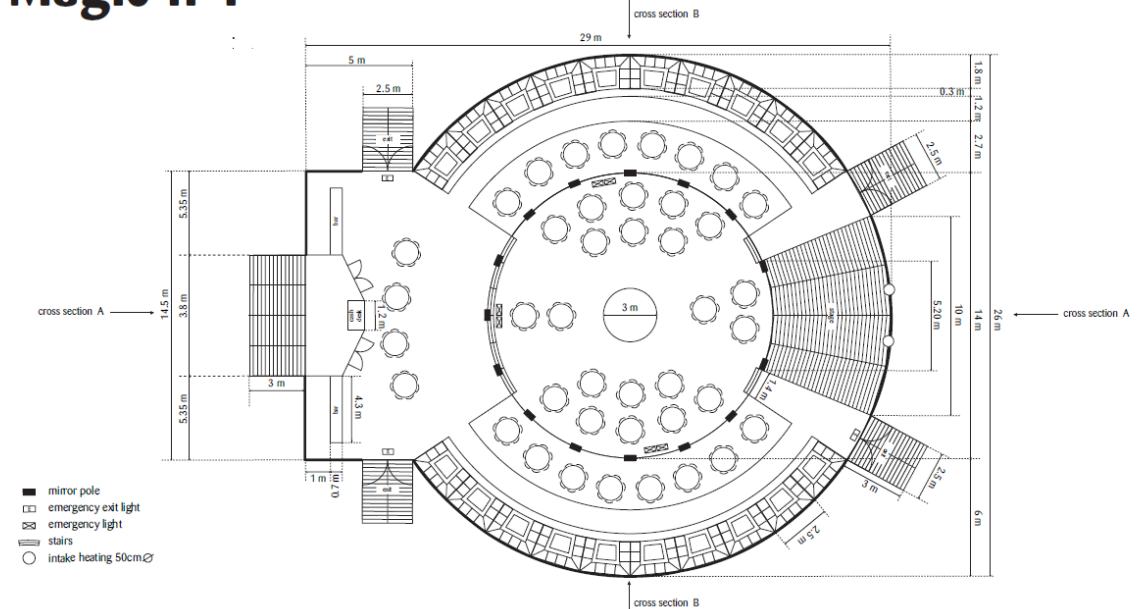
Drawing No.3



Tent Dimension 1

# Magic n°1

©2005 MAGIC MIRRORS All rights reserved. No part of this project may be reproduced, stored in a retrieval system, or transmitted, in any form or by any means, electronic, mechanical, by photocopying, or otherwise without prior written permission of MAGIC MIRRORS.



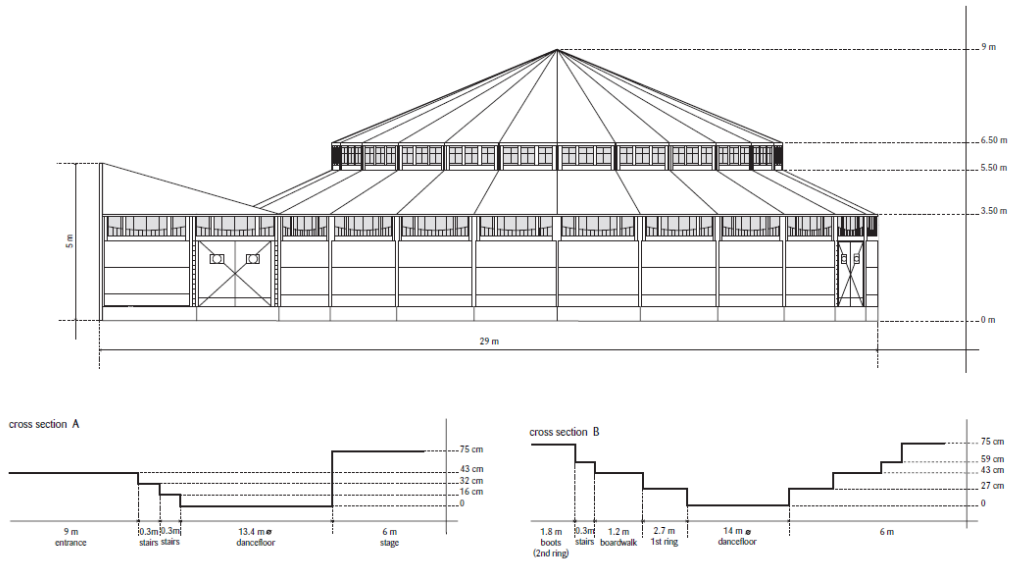
Measurements	Capacity	Transport	Installation	Safety
Diameter: 26 m	Dinner: 500 persons	2 trucks + 2 trailers	Assembling: 3 days	BVCTS (France)
Length: 29 m	Reception: 1000 persons	L x W: 18 x 2m55	Dismantling: 2 days	TÜV (Germany)
Height: 9 m	Theater: 700 persons	Height: 4m	Min. 5 Persons	Others on demand
Surface: 600 m²		Weight: +/- 40 ton/combination		

**MAGIC MIRRORS**

## Tent Dimensions 2

# Magic n°1

©2005 MAGIC MIRRORS All rights reserved. No part of this project may be reproduced, stored in a retrieval system, or transmitted, in any form or by any means, electronic, mechanical, by photocopying, or otherwise without prior written permission of MAGIC MIRRORS.



Boots	Bar	Stage	Lights	Included	Not included
20 boots of max 8 persons	L x W: 4m30 x 0,70 m	Front x Back: 5m20 x 10 m	Basic lights: 18 lamps of 60W	Bar Furniture	Extra Tables & Chairs
Depth: 1m80	Height: 1m10	Depth: 6 m	4 Emergency Exit lights: 360 lm	Cash Desk	Heating & Airconditioning
Width: 2m50	Not equipped	Height: 0,75 m	6 Emergency lights: 360 lm	Stage	Tap installation/Fridge/Sink
Table: 1m x 1m10 x 0,90 m				Light & Sound Bars	Electricity case

MAGIC MIRRORS

## Aerial View

